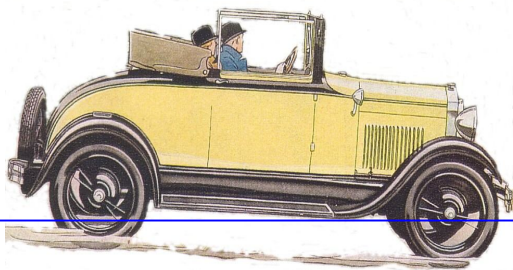


Model A Flyer



Model A Ford Club of NSW Inc

Web site www.modelafordclubofnsw.com.au
January 2015

Club Meetings are held at Holroyd Community Centre, Miller St., Merrylands. The parking entrance is in Newman Street. Meetings are held from 8 pm on the second Friday of each month unless otherwise stated.

PRESIDENT'S REPORT

Hello everyone and welcome to 2015. I hope that we all can leave our troubles behind and prosper in health and wealth this year.

Robert Brown's excursion to the "Honey Farm" carried some surprises, as firstly there was not a single bee or hive to be seen as they are all agisted out to where the flowers are. After a lunch Robert demonstrated his prowess at setting up a new hive and then treated us all to a quiz to find out who had been paying attention with the winner's prize, being a jar of honey.

John Everett snr. is still doing it tough in hospital, I hope that the doctor's get to work soon and overhaul his engine. Everyone at the January meeting sends their regards and wishes for a complete and rapid recovery.

I am sorry that Ron Huckstepp has had to retire from his position as membership director due to health issues. I am very appreciative of Ron's contributions to the club in all of the time that I have been a



member and my best wishes to Ron and Gail, with thanks.

Peter Wigzell has accepted the challenge to take over as membership director for the rest of the year as well as his existing role of Vice President. Congratulations and thank you Peter, try to keep the vice to a minimum and the membership to a maximum.

Our next outing is the Twilight run and then CARNIVALE on the 26 Jan for

those who have tickets.

I Hope to see lots of Wednesday Wanderers in Sydney on Wed. 4th. February for a morning at the movies!

Regards

Tom and Carol Virgona

Your 2015 Committee

President	Tom Virgona	02 9809-6350 or 0420-342-392
Vice Pres	Peter Wigzell	02 9837-2490 or 0419 259 056
Secretary/Club Reg	Rob Taylor	02 9411 5644 or 0417 861 411
Treasurer	Trevor Davis	02 9484-5116 or 0400-285-088
Public Officer	John Hyland	02 4657 1734
Committee Members	Ken Young	02 4677-2446 or 0428-697-717
	Jim Haling	02 9498-5038 or 0431 904 311

Ford Delegates

Phil Dalton	02 4659 6075 or 0481 348 295
Ron Elks	02 9644-9059 or 0419-296-201
Ron Elks	02 9644-9059 or 0419-296-201
Phil Dalton	02 4659 6075 or 0481 348 295
Peter Wigzell	02 9837-2490 or 0419 259 056
Jim Allingham	02 9522 6094 or 0418 674 059
Rob Taylor	02 9411 5644 or 0417 861 411
John Hyland	02 4657 1734

CMC Delegates

Memberships

Librarian

Editor

Wanders co-ord

Editors email: thetaylors79@bigpond.com

Upcoming Model A Runs

Twilight Run Deepwater Park Saturday 17th January

Saturday 17th January meet at Deepwater Park off Henry Lawson Drive at 3pm for a club sponsored sausage sizzle.

Please bring your chairs, drinks & tables for a comfortable post Christmas get together.
Run co-ord John Hyland 4657 1734



Northern A Run 18th January to Hunter Valley Zoo

Northern A run to Hunter Valley Zoo to see their latest arrival , two pairs of meerkats.

Meet at Kurri Park at 9.00am for morning tea then depart at 9.30am

Arrive at Hunter Valley Zoo 10.00am

BBQ and shelter reserved for Model A Ford Club

Call Leon Panov 0417491547 if your coming.



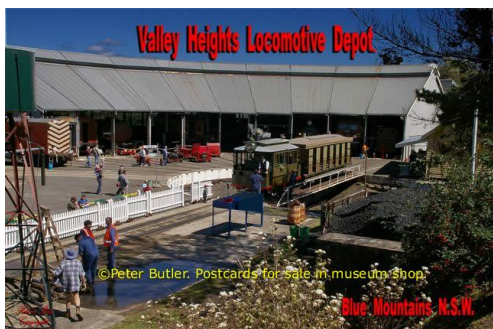
Saturday 7th Feb - Neville Jones's last Maintenance Seminar & SWAP Meet



Saturday 7th Feb starting at 1pm. This will be Neville's final Maintenance Seminar, as he and Annette are preparing to down-size. Neville has lots of Model A parts that he will have up for sale, but would also like members to bring along any parts they might like to sell, for what will be a MINI SWAP Meet. Neville has done a wonderful job over many years in getting club members together to show them how to maintain their cars. So lets see a good turn out

for his last event. **Remember 1pm start at 44 Chapel Lane, Baulkham Hills, 2153**

Tel: 9639-7044



Sunday 22nd Feb - Roaring 20's @ The Valley Heights Locomotive Depot Heritage Museum

Please note the date and venue change for the February run. We are now joining the Model T Club at the Valley Heights Locomotive Museum celebrating the ROARING 20's.

So get out the glad rags and dress up for what looks to be a fun day at Valley Heights Locomotive Depot Heritage Museum, Tusculum Rd, Valley Heights 2777. Timings will be in the February Newsletter

Model A Run—Sunday 15th Mar - Historical Aircraft Albion

Sunday 15th Mar - The Historical Aircraft Restoration Society (HARS) at the Illawarra Regional Airport at Albion Park.

The display will be held outside the HARS hangars and will involve the static display of some its distinctive aircraft. You will be able to board and sit in some of the aircraft including the cockpits of aircraft such as our F-111C fighter bomber and Neptune submarine hunter. There will also be guided tours of the aircraft on display.

BYO lunch & drinks, an eating area will be provided. More details next newsletter.

Model A Run - Sunday 29th Mar - Vintage Car Display Cronulla

Ken Warburton is organising a Vintage Car Display in Cronulla's main strip on Sunday 29th March. This is a fund raising event sponsored by Cronulla Rotary Club to raise money for the disabled. Not only will there be lots of vintage cars on display, there will also be many ways to spend you money, all for a good

cause. Ken would really love to see a good turn out of Model A Fords, as this is his club, but he will be getting many other car clubs from in Sydney to attend. So please put this day in your calendar: 9am - 3pm for the vehicle static display.

The Wednesday Wanderers

Wednesday 4th Feb The Wanderers are going to the movies!!

Wednesday 4th Feb we meet at the Gateway Cafe 9 am for coffee, then onto **The Dendy Cinema** at the Quay for a movie to be decided on the day. 10 am movie start (UNBROKEN might still be showing) with lunch close by.

Co-ordinators are Joan & Don Bailey 95334030



Wednesday Wanderers March 4th outing organised by Harry & Laurel Huckstepp to view a classic car collection on Razorback Mt; more details next flyer.

Market Place

For Sale: Model A Generator **Des Fitzgerald 9605 6026 or 0421084170**

For Sale: Snyders Folding Timber & Chrome Luggage Rack €644, brand new ignition switch cable \$30 **Rob Taylor 0417 816 411**

For Sale: 5 6 A Model Roadster, ex cond, fully restored, €6 ,944. **Kevin Jan 4856 99,**

email: kvjan@ozemail.com.au

Wanted: 5 74 Model A Roadster roof irons any condition **Sid Turner 86 5 6 or Paul 485 59 579**

FREE: Model A exhaust system, used **Jim Allingham 485 8 4**

Services: Model A Ford White Metal Bearings - if needed **call Dean, Dean Repairs on 0418 680 027**

Young Cherry Country Model A Rally to be held from 15th to 18th May 2015



Model A club members and their friends are invited to take part in the Young Cherry Country Model A Rally to be held from the 15th to 18th May 2015.

Young is the centre of a district that was originally mostly sheep runs and later one of the richest and most populous goldfields in New South Wales. Today it is known as the 'Cherry Capital of Australia', growing a variety of cherries and other stone fruit. Many of Young's cherry orchards welcome visitors to 'pick your own' cherries and other fruit in season. Containers are supplied and advice given, and some have barbecue areas and other facilities. Young is also part of the Hilltops wine region, boasting several wineries with cellar doors. In an area known as Blackguard Gully, at the end of Whiteman Avenue, a signposted walk guides visitors through 3ha of old mining remains. Chinaman's Dam, just out of town, is a popular picnic spot where the Chinese miners sluiced their gold after the riots, and is now home to the Lambing Flat Chinese Tribute Gardens. Where is Young I hear some of you say! www.visityoung.com.au/ and how do I get there! <http://r.whereis.com/yDQCBuP>

The Rally:

Date: Fri 15th May to Mon 18th May 2015

Friday 15th: Y.H.M.C. Club House . Arrival, Registration and afternoon Tea - small run followed by a get to know you evening meal and drinks.

Saturday 16th: Finalise arrivals/registration (where necessary) . The first of the two major runs. The runs of course are to be finalised, however we envisage maybe to Temora . A circuit course with a return journey of some 100miles . Possible morning tea at the Stockinbingal Pub, lunch Temora. Temora has the famous aviation and Historical Museum. Rich pastoral country side. A number of village pubs to visit. We intend inviting vintage (other than Model As 1931 & pre) car members of our club (YHMC) to take part and meet with the Model Aers on one of the runs.

Sunday 17th: Run #2. Similar to the Saturday. However possibly take in a number of outlying villages with their individual and unique sights

of interest. These range from a fantastic " Light Horse & WW1 paraphernalia, country museums, pubs, gardens. Possibly a circuit course say 80/100 miles. Sunday evening dinner at the " yet to be decided"

Monday 18th: Aussie BBQ breakfast at "Lambing Flat Chinese Tribute Gardens" before departing for home.

Accommodation: We will provide information regarding accommodation costs shortly. We are going to talk with the Young Services Club which has excellent facilities for the Dinner as well as motel accommodation (The Federation) .

In summary Col and I see great potential for a Model A Rally here in Young with reasonable quite roads in all directions with many places of interest to visit and enjoy our country lifestyle . We are canvassing other car clubs to join from Sydney , Canberra , Wagga, Albury and the South West region of NSW. I

PLEASE EMAIL Barry if you intend coming along to assist the boys with planning... Thanks barry-rose@netspace.net.au

We will update information both via email and this newsletter over the next couple of months.

Kind Regards

Col Harmer Mob 0419822975

Barry Rose Mob 0409490223



1928 - 32 MODEL A FORD AUSTRALIAN LOCAL BODY PRODUCTION

By David Slater - Restored Cars #227 Dec 2014

This is an abridged article as supplied by Club Member Ron Williams.

1925 – 29 During the period 1925-29, the sole responsibility for construction of Model T & A body styles from fully imported panels and parts supplied by Ford in Canada, was given to the Ford Manufacturing Company located in Geelong, Vic. Once paint and upholstery was completed, the bodies were then sold to the Ford Motor Company, and shipped by rail to various assembly plants in Adelaide, Brisbane, Perth or Sydney, whereupon they were fitted onto chassis that were locally assembled on an extremely basic production line.

1930 Commencing in May 1930 in an attempt to save on the cost of high import duties & tariffs, the manufacturing division commenced production of locally built Phaeton, Roadster, Sports Coupe, Town Sedan & Light Delivery bodies. Given that production numbers were relatively low at this time, the USA and Canadian style pressed metal channels were substituted with a timber sub frame. Subsequently only the cowl, petrol tank, windscreen frame, top irons and spare tyre carrier, along with door handles, hinges and dash panels were imported.

Doors and rear body sections, which were all on timber frames (coach built), were locally made and fitted. Once the paint and upholstery was completed, the bodies were all shipped via rail to the various assembly plants previously mentioned.

As far as the 1928 Roadster was concerned, this body style was not manufactured until January 1929. In that year however, the Australian Sports Roadster & Sports Phaeton were introduced as deluxe models. The sport versions had nickel plated windscreen frames, a wider range of colour options, the choice of bonnet louvre line work, and a nickel-plated luggage rack fitted. It was in May 1930, that the improved body styles for the Model A commenced production in Australia, and this continued until May 1932.

It is interesting to note that we were overstocked with 1930 body styles due to the Depression. Hence no 1931 vehicles were marketed and sales of the 1930 style continued until the last body was made in May 1932. All AA trucks in Australia were of the 1928/29 body style.

An interesting fact of the 1929 data relates to the Fabric Tudor and Fordor Sedans. Very little information is to hand regarding these styles, oth-

er than the actual quantities produced and their subsequent sales to Ford Dealers. Rumour has it that Britain was selling fabricated bodies as a luxury automobile and Australia tried to test the market and profit with additional sales. The 1929 *"Colour Harmony Chart"* describes the vehicle thus, *"A car of handsome appearance with sturdily constructed fabric body, specially designed for silence, coolness and comfort. Body is rich olive green with light mouldings in black and silver. Mudguards and wheels are black. The fabric body remains free from body noises, and from any trace of resonance at all speeds."* However the vehicles proved more expensive to produce than what the Australian public was willing to pay. It appears that the fabric sedan was not simply a normal body style covered with rubberised fabric, but an individually handmade vehicle with a very high timber content. According to one of Australia's leading Model A enthusiasts, Ian Irwin, a Fabric Fordor sedan visited all the Ford dealers and agencies from Brisbane to Townsville, Queensland, in an attempt to gain sales, but due to a lack of interest was finally recalled to Geelong with no sales made. There are only two Fordor sedans known to have survived the passage of time out of 87 made.

Production Numbers

Listed are the production figures for Australian Model A manufactured bodies for the period 1928 - 32:

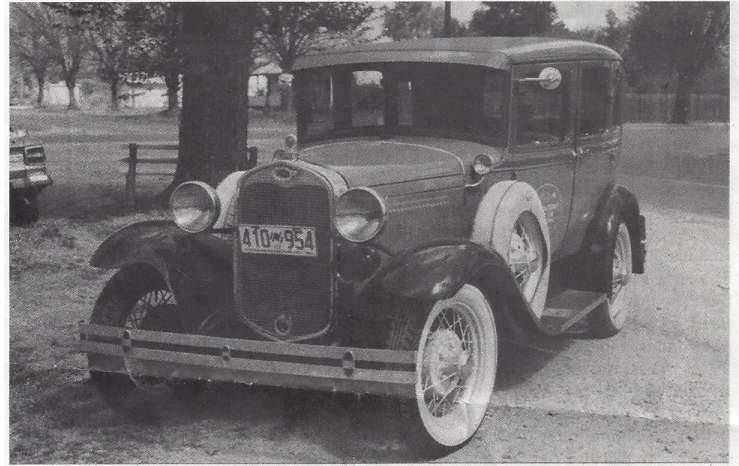
- 1928: Phaeton 5,848, Light Delivery 616, Van 100, Trucks AA 55, total 6,619
- 1929: Phaeton 4,109, Sports Phaeton 839, Roadster 887, Sports Roadster 1,189, Light Delivery 1,337, Van 50, Fabric Fordor 78, Fabric Tudor 9, total 8,498
- 1930: Phaeton 452, Sports Phaeton 777, Roadster 29, Sports Roadster 297, Light Delivery 221, Fabric Fordor 9, total 1,785
- 1931: Phaeton 77, Sports Phaeton 183, Roadster 148, Sports Roadster 192, Town Sedan 161, Sports Coupe 61, Fordor 12, Light Delivery Standard 24, Light Delivery Well type 87, Light Delivery with cab 8, Light Delivery Well type with cab 1, AA truck cab closed 17, total 972
- 1932: Phaeton 120, Sports Phaeton 89, Roadster 74, Sports Roadster 162, Town Sedan 90, Sports Coupe 15, Fordor 9, Light Delivery

Continued next page

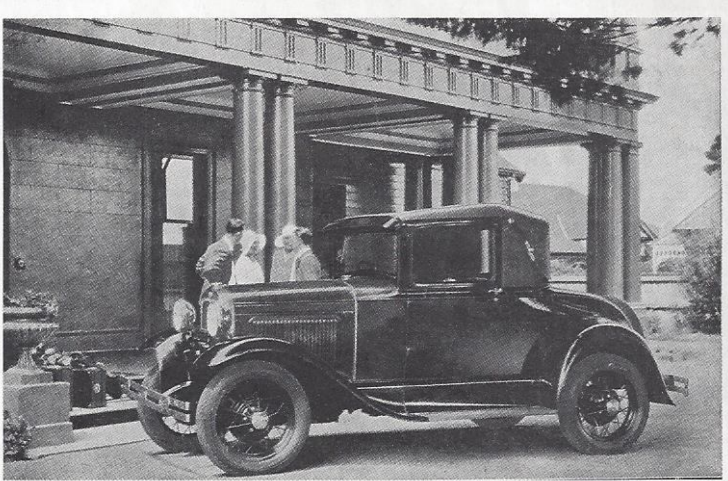
1932 continued ...Standard 14, Light Delivery Well typ 72, Light Delivery Standard with cab 5, AA truck cab closed full doors 16, AA truck cab doors 47, total 713

Model A Sales

Listed are the Model A sales from Ford Motor Company to Ford dealers in Australia for 1928. Phaeton 5,095, Roadster 9, Light Delivery Standard 350, Light Delivery Well type 110, Van 67, commercial chassis 253, Fordor 95, Tudor 519, Sports Coupe 146, Business Coupe 12, AA truck chassis 56, AA trucks Dropside 26, AA trucks Stakeside 28, AA trucks combination 1, total 6,767



The 1930-31 Model A Town Sedan. It featured a wooden framed body with local pressed-steel skins, similar to Holden-bodied GM vehicles of the same period. Tooling was expensive for low production runs such as in Australia, particularly in the depths of the Depression. Ford Australia continued this style of body construction up to 1934. See more on Australian built Model As on page 12.



The Australian Fordoner (Ford's in-house publication) of February 1932, showing the 1930 Model A Sports Coupe still being marketed. No mention of the imminent arrival of the V8 models.



The new Phaeton, 1929 style, featured outside door handles on open cars, as well as some other differences to the previous model.

The NSW Model A Ford Committee wish all members a very healthy and prosperous 2015 with many miles of trouble free motoring.

