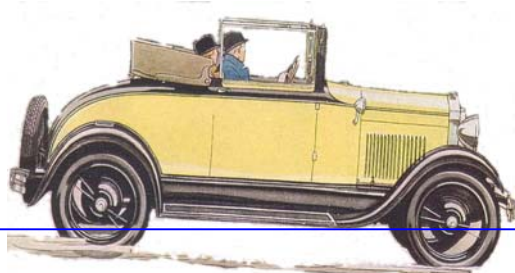


Model A Flyer



Model A Ford Club of NSW Inc

Web site www.modelafordclubofnsw.com.au

February 2017

Club Meetings are held at Holroyd Community Centre, Miller St., Merrylands. The parking entrance is in Newman Street. Meetings are held from 8 pm on the second Friday of each month unless otherwise stated.

PRESIDENT'S REPORT



We have had two really well supported events in January, with the Deepwater Twilight BBQ again drawing a crowd, and the Northern A's Memorial Run to Broke and beyond. Thanks to those members for organising such successful events. So far this year the heat has caused a few issues when it comes to driving Model A's. Our Feb run to Millbride Nursing Home was cancelled due to severe heat conditions. I am hoping that we are now past all this terrible hot weather. Been too hot to even go out and polish the old girl.

The Northern A's still have a run coming up at the end of the month. Details are in this issue. Also 19th March is the Cronulla Pre WW11 Vintage Car and Bike Show put on by member Ken Warburton. Details also in this issue.

I would ask those members who have not as yet renewed, please do so now, or advise us in writing if you will not be renewing.

Thanks.

I wish to advise members that Joan Bates had a stroke at the end of January and is in St George Hospital. Best wishes to you Joan...and to Trevor Davis, who is not well.

We wish both of you a speedy recovery.

Regards Rob Taylor



Your 2017 committee

President	Rob Taylor	0434 314 198	CFC & CMC	Phil Dalton	0413 970 704
V/President	Peter Butler	4739 5723		Ron Elks	0419 296 201
Treasurer	Jim Haling	0431 904 311	Librarian	Carol Butler	4739 5723
Secretary	Robert Brown	0439 731 066	Wanderers	Tom Virgona	0420 342 392
Committee #1	Ken Young	0428 697 717	Newsletter	Rob Taylor	0434 314 198
Committee #2	Ron Williams	0427 868 197			
Public Officer	Rob Taylor	0434 314198			
Membership	Jim Haling	0431 904 311			

thetaylors79@bigpond.com

Mail: PO Box 1038 MERRYLANDS 2160

Northern A's Run Saturday 25th Feb Norah Head Lighthouse

10am meet at "The Ark" 8 Bush Street Norah Head for coffee. Norah Head Lighthouse just down the road, and tour is \$6pp leaving on the half hour.

Lunch to follow at 12:30pm at Lorraine & Peter Michaels at Brightwater. Lorraine will organise sausages and rolls thanks to Bob's benefactor.

Newcastle Group depart 0845am from opposite Go Kart Track Cameron Park. Travel through WW, Teralba, Speers Point, Warners Bay

Central Coast Group call Bob for details

Feel free to bring a salad or desert to share.
Di Paice



Sunday 19th March Pre WW11 Vintage Car & Bike Show

This is the 3rd event at Cronulla to raise funds for the Sylvanvale Foundation, an organisation that supports the disabled.

Location: Cronulla Mall, Cronulla Beach, NSW

Date: Sunday 19th March, 2017

Time: Please arrive by 8:00am departing at 4:00pm.

It's a great day at Cronulla and we have 15 spaces, so call Ken Warbo 0438 692 737 to book a spot.



NORMAN LINDSAY GALLERY & MUSEUM



Proposed Run Sunday 23rd April -

It is being planned that we park our cars at the back of the museum where there are many trees. Bring a picnic lunch, or enjoy the local café onsite. Museum entry is free for National Trust Members, \$12 concession or \$15 adults. Meet at Glenbrook Visitor Centre, **time TBA**

Northern A's January Memorial Run Report

The Northern 's Memorial Run on Sunday 29th January was a very popular event with 7 Model A's & 24 guests. Jenny Brown, Paul Bullen & Larry Gee were all remembered that day, and their presence was felt.

Broke did not disappoint reaching 40C. Views of the grape laden vines ripe for picking and the spectacular Brokenback Ranges made a perfect backdrop. Starline Alpacas farm provided lovely shaded trees and a very interesting talk was given about the difficulty in raising Alpacas. We then visited Hermitage Road Antiques followed by a wonderful lunch at Buon Cibo Pokolbin Village.

Carlos Silver had a few issues with his carbie and distributor and we wish to welcome new member Colin Parry in his Woody. Cheers Di & Peter Paice



Twilight January Run to Deepwater

It was another great day with 13 Model A's arriving, one "T" Model (Charlie Sharp) and one Morris Minor (Ron Cox). The great Gatsby Taxi arrived in spectacular form behind Mal Bradley's Cabriolet with a tow rope between them. Jim broke down about a kilometre from the turn off to Deepwater Park and made an urgent call to Mal for help. The repair of Jim's car looked like a Saturday Maintenance day with Mal under the bonnet and a host of onlookers watching and waiting for a successful result. The result was proven with a fly past (errr drive past) by Jim testing out the repairs. Successful it would seem but it proved that further attention was required on the trip home.

John and Marie Hyland suffered a similar problem, and switched to a modern for the event.

Another great turn out & Neale Finn did his usual entrée of Prawns and Octopus on the BBQ. Then it was on with the sausage sizzle to appease the minions cooked by chefs Peter Butler, Russ Johnson, Ken Young and several passers by offering their assistance.

The party was over prior to the invasion of the mosquito plague which was reported to be in the area and we think everybody escaped being eaten by these pests.

We can look forward to another Twilight run next year on the same grounds as it seems to be a popular event for the first one of the year. Regards Ken Young.



The Wednesday Wanderers

1st Feb - Wanderer's Lunch Report at Doyle's, Watsons Bay

On an overcast day with scattered showers thirteen wanderers assembled at the new Gateway Centre at Circular Quay. We settled in to the plush new coffee lounge and were pleased that there was none of the overcrowding that occurs at lunchtime. Due to the inclement weather most were not keen on the long bus trip and long walk and a decision was made to linger a while longer and then proceed by Ferry to Watson's Bay. When I was about to board the ferry I received a phone call from Jim Allingham who, thinking that he was running a little late, travelled on the earlier ferry and was already at Watson's Bay. Jim was taken aback to realise that he was way ahead of the group! When we all arrived at Watsons Bay a debate began as to which of the many Doyles eateries to patronise. Finally we agreed on the picturesque wharf dining room where a meal is purchased at the kiosk and then consumed in idyllic surroundings over the waters of the bay. After lunch, all back onto a ferry to circular Quay, and then home. Regards Tom Virgona.

Upcoming - 1st March Sculptures on the Wharf, Woolloomooloo



On Wednesday 1st of March we will visit "Sculptures on the wharf" at the Finger Wharf

no.6 Cowper Wharf Rd, Woolloomooloo. We will meet at the AMP Retail plaza at 50 Bridge St Sydney for coffee and leave at 10 am to walk up to the Mitchell Library and on to the Art Gallery, then down through the park towards Garden Island to the Finger Wharf. Lunch will be at one of the many eateries on Cowper Wharf Rd. Afterwards we will proceed by bus to the Sydney Town Hall for transport home. Anyone who wishes to avoid the thirty minute walk with many steps can meet us at the wharf by taking the 311 bus from stand A in York st near to the Town Hall.

For info call Tom Virgona 0420 342 392
5th April we will visit Barangaroo

Final Call - Membership Renewals Please

Please remember that if you have a car on "Historic Registration" with this club, and you have not renewed your fees; you cannot drive your car as it is considered unregistered. You MUST be a financial member of your nominated car club to qualify for "Historic Registration" and to maintain your registration.

Please go to our website under Memberships to print off your renewal form. The form also has EFT payment details. Thanks

Club Items Available

*** Club Window Stickers \$3.00 * Club Metal Badge \$25 * Club Cloth Badge \$5**

Call the Treasurer Jim Haling 0431 904 311 if interested.

The beginning of Dougie Bull's Dream, which may also create a few nightmares.



Doug has a dream, that he will finish this AA truck in 2018 and take it on a round the world tour. Already there are issues getting the car through Asia, but I think there will be other issues first in getting the old girl finished. Best of luck Doug, you have to have goals and dreams mate..

Market Place

For Sale: 1928 Phaeton (Norm Boshers old car) - \$28500 call Rolf Chrystal 0414 653 250

For Sale: 1928 Phaeton in ACT belongs to Kiwi - \$20000 ONO contact via email

ian@campfirecreative.co.nz or view at <http://www.trademe.co.nz/Browse/Listing.aspx?id=1258937551&ed=true>

For Sale: 1929 LHD Roadster in excellent condition - call Ken Warburton 0438-692-737

For Sale: New 21" 4.50 Firestone Tyre \$150 ONO & New 21" 4.50 Firestone Delux Champion on freshly painted rim \$250 ONO, call Bill Brice 4858 66 22 85

Wanted: Model A Tudor in good condition John Stevens Nambucca Heads 0407411496

Wanted: 28/29 AA truck. timken diff, rear hubs or wooden spoked wheels any condition - Doug Bull 0447 745714.

Wanted: 1929 Model A Tudor, in reasonable condition, call David Cox 46 3187 9399

Wanted: 1930 Model A roadster in good condition. Eddy Tabone (02) 9636 7776 (M) 0412 663 608

Wanted: 2 tooth steering box only, bell housing with pedals RHD. John Carroll 02 9871 8473 or 0423 502 203

Wanted: RHD conversion parts, bell housing with pedals, 2 tooth steering box, spark/advance & throttle rods, starter pedal, gearbox top with central handbrake, foot brake cross shaft, intake manifold with swivel, accelerator pedal, front stub axle steering links and RH drag link. Ralph Stedman 0407 755 747 or Blantyre@hotmail.com

Services: Model A Ford White Metal Bearings - if needed call Dean, Dean Repairs 0401767761

Please advise me if your ad is no longer required. Editor

TO RESTORE OR NOT TO! 1928 MODEL A PHAETON

By Eddie Ford

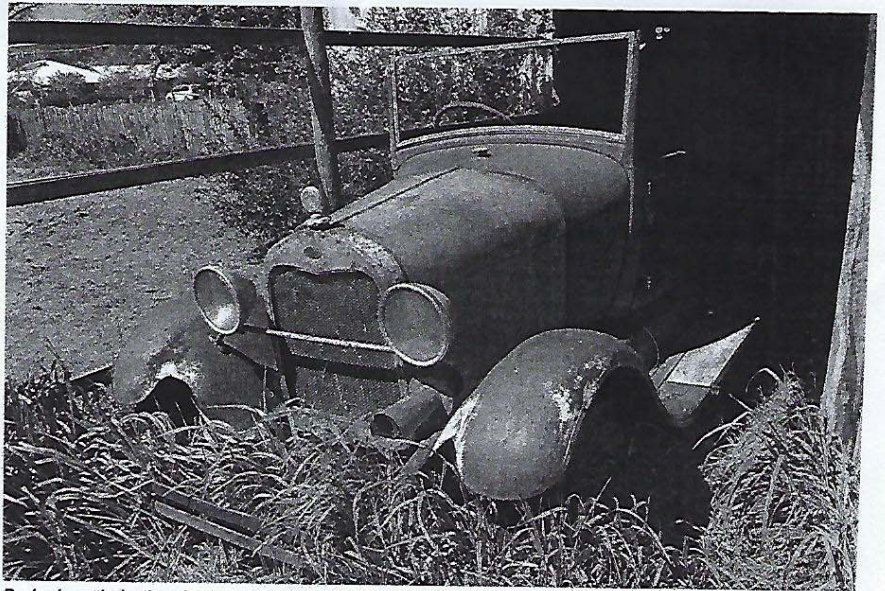
In Australia some 16,049 cars were sold in 1928 and 9,832 in 1929. Most of these would have been Model A Fords. It was not until 1955 that Ford sold over 16,000 vehicles from North American origins and that would have been their first OHV V8 car, the Customline. With numbers such as this it is no wonder that you can still find Model As in sheds and in abundance at most swap meets today.

If you are going to restore a car of any type, a 1965-66 Mustang or a Model A Ford would be the best to start off with. The reason is they were produced in very large numbers and they are the most popular Fords, enjoyed by a very large number of enthusiasts.

Ford events attract thousands and almost every car part is reproduced in quality and quantity. They are enjoyed by owners who either keep them as Henry built them, or modify them from 'mild to wild'.

The Model A Ford was introduced in 1928 in Australia to a very big fanfare. For nearly 20 years virtually the only Ford was the Model T, and when a successor was announced, it was the news event of the decade.

Town halls were rented across the nation and the newspapers were filled with the event. Thousands visited the promotion and hundreds of orders were taken.



Parked partly in the shed, this topless car's interior has not been subjected to the weather. We noted had a nice brass section windscreen frame, which we do not believe was a Ford item. The red steering indicates a 1928 model, although Ford designer Lou Bandt told me back in the 1970s that Ford Austral parts that overlapped into the next year's model if they fitted.



LEFT. The fr dash, etc. N the all-steel unlike the 19 Australian-b bodies, which were wood framed. The no outside handles on 1928 model:

BELOW. T1 engine runs and started These were large 4 cyli types of 20



ABOVE. The rear tub section showed no corrosion. The car was in red primer and a restoration had been started at some point of time.

