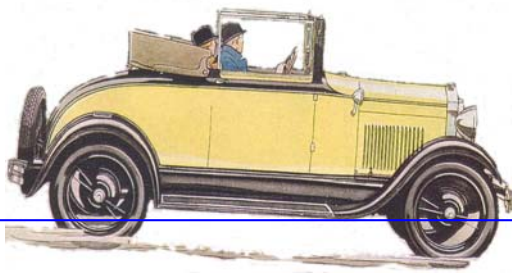


Model A Flyer



Model A Ford Club of NSW Inc

Web site www.modelafordclubofnsw.com.au

June 2018

Club Meetings are held at Holroyd Community Centre, Miller St., Merrylands. The parking entrance is in Newman Street. Meetings are held from 8 pm on the second Friday of each month unless otherwise stated.

PRESIDENT'S REPORT



I attended the CMC meeting on 29th May and Terry Thompson who is the President confirmed that our "Invitation Runs" as published in our Flyer are treated the same as club runs & you do not need to fill in an entry on your log book for these runs. These runs must be documented in the minutes and published in the Flyer. NOTE: You must carry a copy of the Flyer in your vehicle when attending a club or invitation run. Otherwise if the police pull you over you may be booked. The weekend of 12-13 May saw 218 Model A's descend upon Gulgong. Many of them rodded vehicles but the original Model A's were well represented although in the minority. Those members who attended had a wonderful weekend and we enjoyed some great comradery with each other and the owners of the

rodded Model A's. Organisers Scotty Poll and Peter Templeton did a great job. Our Facebook page has some photos posted covering this event.

Thank you to those members who attended the run organised by Charlie Sharp on May 20th. 16 Model A's in attendance and a few moderns. Another great day out. Many thanks Charlie. The maintenance day on June 2nd saw 11 Model A's and 3 moderns. We all learnt something and it was good to see members interacting and helping each other. We are receiving great support from our members in attending the events organised by our club which is good to see.

A reminder, if you wish to attend the next Model A National Rally in Murray Bridge in South Australia, the cut off date for applications is June 30th. The S.A. club cannot guarantee any orders received after this date. I was talking with Rally Chairman who said there were 161 entries so far. Accommodation is still available as I only booked mine recently. So please if you are going send in your entry form and meals and merchandise forms ASAP.

Winter has now officially arrived so rug up and keep well.

Looking forward to seeing you out and about soon.

Regards Robert Brown

Your 2018 committee

President	Robert Brown 0439 731 066	CFC & CMC	Phil Dalton 0413 970 704
V/President	Ron Elks 0419 296 201		Ron Elks 0419 296 201
Treasurer	Charlie Sharpe 0404 014 583	Librarian	Carol Butler 4739 5723
Secretary	Helen Sharpe 0429 998 958	Wanderers	Tom Virgona 0420 342 392
Committee #1	Ken Young 0428 697 717	Newsletter	Rob Taylor 0434 314 198
Committee #2	Jim Allingham 0418 674 059		thetaylors79@bigpond.com
Public Officer	Rob Taylor 0434 314 198	Mail:	PO Box 1038 MERRYLANDS 2160
Membership	Charlie Sharpe 0404 014 583		

Northern A's Run - Saturday 16th June to see the Garland Collection

Meet: 9am Visitor Information Centre, Main Street Kurri for coffee. We will then depart in convoy for Butterwick to arrive 11am.

Location: Steve & Meagan's, 414 Butterwick Road, Butterwick, 2321

Lunch: Steve & Meagan will put on a BBQ, please bring chairs & drinks. Please call the Garlands on 4938-5264 0417-607-902 for catering purposes.



Sunday 17th June - Kurrajong Tour

Meet: McDonalds at McGraths Hill at 10am

Depart: 10:30am for a 30km country tour led by Bryan Wyborn. We will stop at Streeton Lookout before moving on to Bryan & Marguerite's home at 16 Jacaranda Road, Kurrajong. Bryan will have all his cars on display on arrival.



Lunch: Bryan & Marguerite will put on a sausage sizzle, please bring chairs and drinks

Future Runs

Sunday 29th July - All Fords Day Eastern Creek International Raceway

Sunday 12th August - Combined Motor Clubs Day Eastern Creek International Raceway

Sunday 19th August - Maroota Muster at Maroota Public School

Invitation Events

- **10th June - Victorian Model A Club** visiting Gosford Car Museum, meet the crew.
- **14th & 15th July - Menangle Military Muster** at Campbelltown Steam Museum

If you wish to purchase spares for your Model A, Keith & Glenys Eastwood run Henry's Spares in Victoria.

Visit their website and view the catalogue at:

henryspares.com.au

Henry's

KEITH & GLENYS
EASTWOOD

129 BALLANEE ROAD
BALLAN 3342
VICTORIA, AUSTRALIA

PH: (03) 5368 1088
FAX: (03) 5368 1007
MOBILE: 0402 194 723

T, A & Rod Parts

EMAIL: kg@henryspares.com.au
WEB: www.henryspares.com.au

facebook

Gulgong 90th Model A Ford Event



Sydney Sinclair Ford 90th Model A Ford Event



Maintenance Day @ Guildford 2nd June



The attendance by members with their Model As filled all available space at the Sydney Safety Training at Guildford. Rob Taylor ran members through the extent of information covered by our web site which was a good eye opener to all on what is actually available.

Bryan Wyborn and Greg Cribbin gave us all a good understanding of static balancing techniques using their own equipment. This was followed by wide ranging discussion contributed to by members on a whole

range of topics too extensive to cover here. It always amazes us of the amount of experience held by members on the operation of the Model A. If the general membership realised how informative and entertaining there maintenance days were, we would struggle to fit everyone in, so perhaps we should keep this a secret.

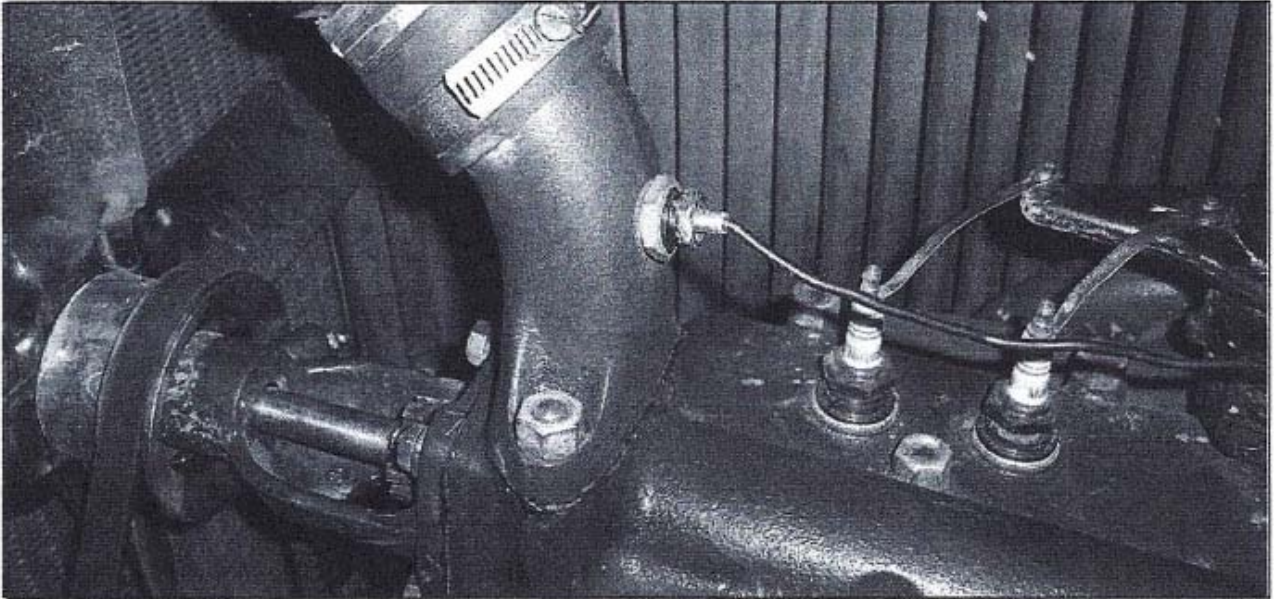
Members were very appreciative of the generosity and hospitality displayed by Rob Taylor for hosting the day.

By Trevor Davis

Do I need a thermostat on my Model A?

That is a question that has been kicked around the garage for some time now. The early thoughts were that a thermostat was needed to slow the water flow in the radiator. Extensive tests have shown that changes in the rate of water flow through the radiator results in negligible change in water temperature. A Model A radiator should cool the engine under normal driving conditions.

A good clean radiator, even a stock one, should keep the engine operating at a normal level (160 -170 degrees). If



your engine is running hot, you should look at all the things that could cause that to occur. An older radiator, one that appears in good shape and flows well, may have deteriorating connections of the fins to the tubes, which reduces its ability to transfer heat to the surrounding air and is usually the cause of engines running hot.

The original design of the Model A radiator is for a Thermo-Syphon system used in conjunction with a water pump. The entire cooling system was engineered to use the best of both types of systems. The thermo-syphon system keeps the coolant in place until the engine reaches an operating temperature of around 180 degrees. The pump increases the flow of coolant when the engine is operating at higher speeds and the thermo-syphon system would not move the coolant fast enough to cool the engine. So the Model A was equipped to have a thermostat of sorts with the thermo-syphon system helping the engine warm up before the coolant started moving.

This still doesn't answer the question regarding installing a new thermostat. The modern fuel of today requires the engine to operate at above 160 degrees to burn clean and with the most efficiency.

Tests were made using a new reproduction radiator along with a high compression head. The Motometer temperature gage (thermometer) on the radiator cap takes it's readings through a special stud, mounted in Motometer. Through many operating conditions, the thermometer never rose to the operating range on the Motometer. A modern temperature gage with degree readings was then installed along with a temperature sensor mounted in the upper water outlet neck. After running the Model A through many operating conditions it was surprising to find that the newly installed temperature gauge never rose above 140 degrees on a hot summer outing.

After seeing the engine operating so cold, a 160-degree thermostat was installed in the upper radiator hose. In a short period of time the engine water temperature now rises to 160degrees F as seen on the Water Temperature Gauge. The opening and closing of the thermostat can be seen on the temperature . gauge as the indicated temperature rises to 170° and then drops to 160° as the thermostat opens and closes.

Installing a thermostat will allow the engine to operate at the most efficient temperature range, getting the most out of the fuel that is being used and at the prices we are being forced to pay you best get the most out of your money.

This is an easy and beneficial improvement that will make your Model A operate at an efficient temperature level, allowing complete and proper burning of the fuel, thereby reducing unburned fuel and fuel contaminates that produce carbon build-up Water Temp Gauge and sludge in the engine. The illustrated thermostat can be purchased from any Model A Parts Supplier in temperature ranges of 160° or 180°F operation. Installing a water temperature sensor in the upper water outlet neck and a water temperature gauge, will provide a more accurate indication of your engines operating temperature.

Article from the Tulsa Model A Ford Website.

A-6331 MAIN BEARING INSTRUCTIONS

CRANKSHAFT SIZE

Standard	1.6254/1.6259
010 Undersize	1.6154/1.6159
020 Undersize	1.6054/1.6059
030 Undersize	1.5954/1.5959
040 Undersize	1.5854/1.5859

Bearings in stock standard thru .040 Undersize

The block and caps will require align boring

Housing bore in block - 1.7705/1.7710

Finish 60-90 micro inches RA.

Cut slots in block and caps for aligning lugs.

Some blocks mainly early 1928, the oil holes are not consistent if oil hole in block is not in line with oil hole in bearing elongate at hole in bearing and remove any burrs. Oil grooves in bearings will provide ample oil for bearings without altering oil pump or system.

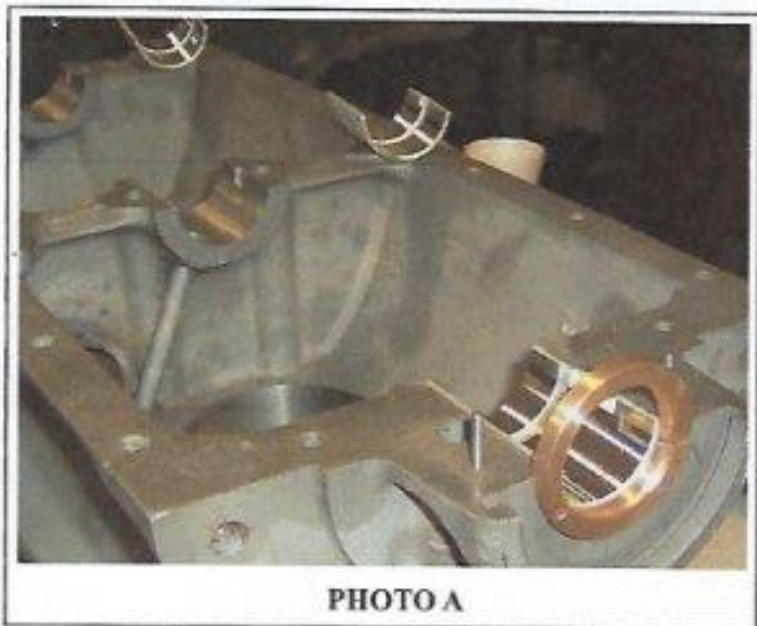


PHOTO A

Photo A shows where the upper thrust washer would be dowelled to the back of the block. The purpose of this dowel is only to keep the thrust washers from rotating, not to keep the washer tightly in place. There is already a hole in your block at that position that was to act as a key for holding the original babbitt in place. You may need to enlarge this hole slightly so that the head of a 10/32 screw will fit in it. Drill and tap the upper thrust washer to 10/32 and install a brass round headed screw. The threaded end should be recessed slightly, it wouldn't hurt to peen the threaded end slightly so there is no chance of the screw backing out. This is the only thrust washer that needs to be dowelled.

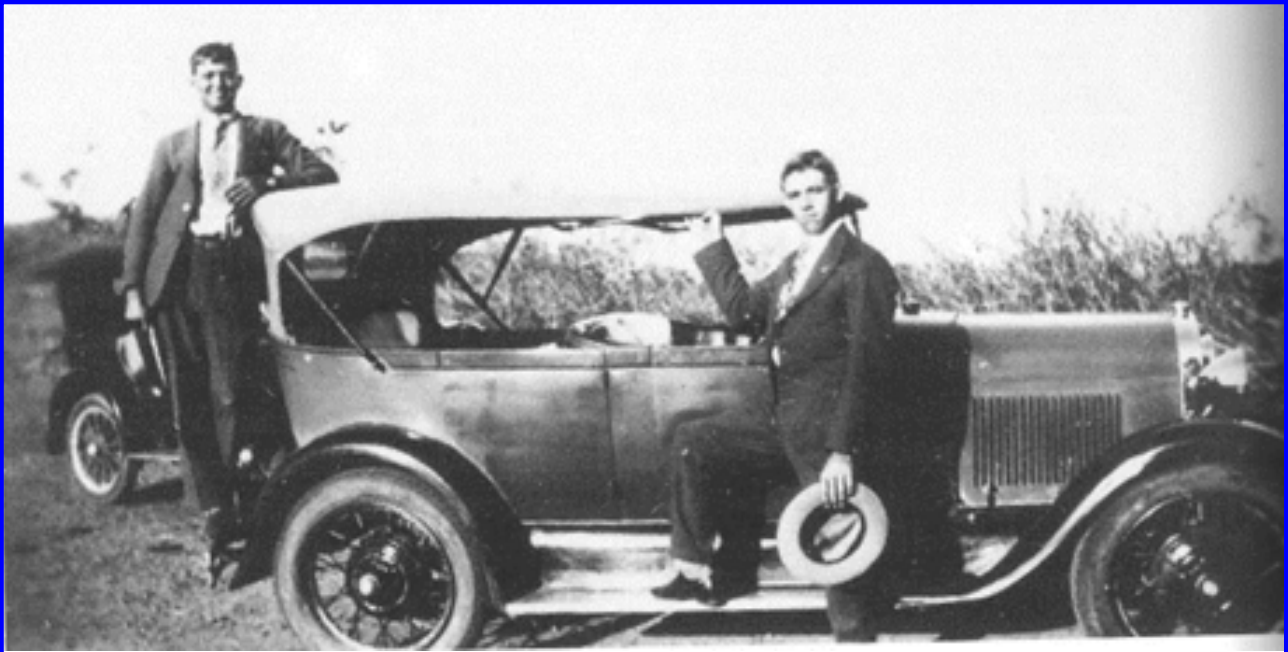
The back of the rear main bearing block and cap is to be counter bored .125 deep and 2.250 diameter the rear thrust washers are held in place by counter bore and crankshaft. The block thrust washer is to be dowelled to block to prevent rotating. Thrust washers are not to be attached or secured as this can cause end loading and abnormal wear.

The front of the rear main bearing block only is counter bored .125 deep and 2.250 diameter. The front thrust washer is held in place by counter bore and crankshaft. The cap not counter bored will prevent the thrust washer from rotating. Again the thrust washer is not secured to block.



PHOTO B

We recommend the use of tri-metal lined bearings with the Model A crankshaft.



An historical family snap with their pride and joy..

The snap originally was published in Eric Fry's book *An Airman Far Away*, Kangaroo Press, 1993; it's been out of print for many years.

The man standing on the back bumper is Doug Williams, born 1906, died 1978, spent his life as a grazier and a farmer in Queensland. The man standing with his foot up on the running board is his brother Charlie, born 1909. Charlie joined the RAAF in 1940; Flying Officer CR Williams, DFC, was killed in action, May 16, 1943, on the raid on the Dams. The Williams family appear to have been Ford purists; while in England Charlie wrote home commiserating that the family had been forced to buy a Chevy!

My interest in all this is that I'm working on a new biography of Charlie.

Susan Paxton

For Sale in South Australia \$35,000 Huckster & Van

Model A Huckster Delivery Van, 1928

One of a kind in Australia. Unique body style.

Restoration completed in 1986

Chassis: Model A

Engine: Model B

Electrical: 12 volt

Seating:

2 x adjustable bucket seats (front)

1 x removable bench seat (cargo area)

Rego: SA Historic rego & road worthy cert

Contact Neil via neil.v.phillips@gmail.com



- **Eccles Deluxe Caravan, 1928 (Replica)**

Built from original plans with some modifications

Chassis: Custom built steel

Exterior: Marine ply, with internal foam insulation

Rego:

Full SA caravan registration (exp Jan 2019) & certified as road worthy

- **Interior:**

Fridge, microwave, sink, fold down table, internal storage and twin single beds.



Market Place

For Sale - Pair of MECHPRO Hydraulic Vehicle Positioning Jacks in good order. Roll the old girls up close! Price \$110. Trevor Davis 02 9484 5116

For Sale - New Model A Coupe Wind Wings and brackets unused \$200, Rob Taylor 0434 314 198

Wanted - Model A Door Check Strap Retainers x 4 original. Call Bryan Wyborn 0428 256 058

Wanted 28/28 Model A Ford Motor - operational, call Phil Dalton 0413 970 704

Wanted: Tillotson X Carburetors x 2 Rob Taylor 0434 314 198

Wanted: Model A Chassis, roadster doors 28-29 and or 30-31, 31 Cowel tank, sides, firewall dash etc. Complete diff assembly. Ted Wrigg 0412288060.

Services: Model A Ford White Metal Bearings - if needed call Dean, Dean Repairs 0401767761



**For Sale in
Queensland
1930 Phaeton
\$32,000**

**Bill Irvine
0754373468 or**

**For Sale in
Western Australia**

1928 Tudor

Good condition

Runs well

Located: Perth, WA

\$27000 ono

Contact Frank: 08 9447 3503.



**For Sale in Sydney
1928 Phaeton**

Original except for new upholstery, top, side curtains, tyres and battery

\$27,000

**Rolfe Chrystal
m: 0414653250**



Wednesday Wanderers

Wednesday 4th July - Qantas Heritage Collection & Museum

Meet: 10am at Central Station Café DuNord. DuNord is located on the light rail side of the concourse, down the escalator towards Eddy Ave. After coffee we will then take the train to the Airport for our museum tour.

The Museum: The Qantas Heritage Collection is a permanent exhibition of the rich and colourful history of Qantas. Located on the mezzanine level of Sydney Domestic Terminal (T3) near Gate 13, it is open to the public, free of charge Monday to Friday between 9.30am and 4.30pm.

Situated overlooking the spectacular background of landing and departing aircraft, it features superb panoramic views of Sydney airport. The Qantas Heritage Collection includes artefacts and memorabilia drawn from thousands of items of historical significance donated by passengers and airline staff.

Tom Virgona 0420 342 392



Advance Notice for 6th - 7th Nov Wed Wanderers Mayfield Gardens Oberon

As this is a popular tourist venue it is essential to have our accommodation secured.

I have booked 8 double rooms at \$109 per room and 4 twin rooms with 1 queen bed and one single @ \$125 per room for 2 people.

Would you please book your room using the Model A Ford Club as soon as possible. This motel is at Oberon itself, Titania Motel Oberon phone 6336 1377

The gardens have a website under Mayfield Gardens Oberon NSW. The gardens are modelled on the same principles as those of the stately homes in the UK and are really spectacular.

Enquiries Barb Boshier 029871 2030



Bianca Everett had her 19th Birthday at the 90th Model 'A' in Gulgong.

**Happy birthday from everyone in the club
Bianca**